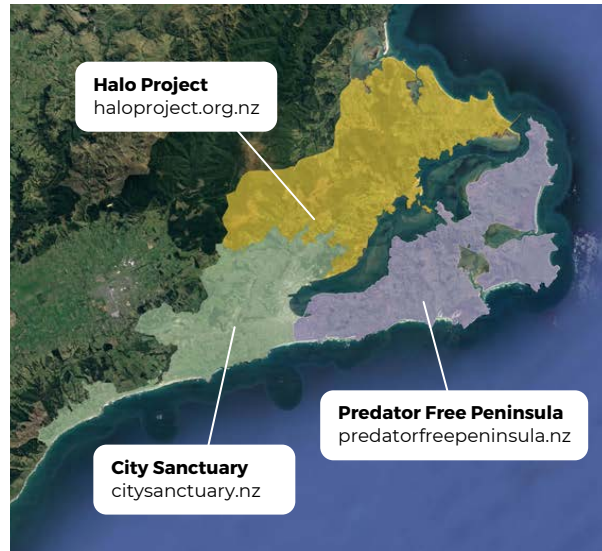


**The T-rex rat trap is a snap trap designed to catch rats and mice.**

It can be easily set by hand or foot and has a removable bait cup that allows you to rebait the trap while it's still set.

The trap comes inside a wooden trap box that keeps pets and children safe.

T-Rex trap has been humane tested against the National Animal Welfare Advisory Committee (NAWAC) Guidelines for ship rats.



City Sanctuary is one of three Predator Free Dunedin projects working together to get rid of possums, rats and stoats from Dunedin's urban and rural landscapes by 2050.

Our vision is to create a vibrant sanctuary in Dunedin city where wildlife thrives and communities are leading predator control in backyards and reserves.

 [info@citysanctuary.nz](mailto:info@citysanctuary.nz)

 [www.citysanctuary.nz](http://www.citysanctuary.nz)

 [@citysanctuarynz](https://www.facebook.com/citysanctuarynz)

 [@citysanctuarynz](https://www.instagram.com/citysanctuarynz)



# T-REX RAT TRAP

## INSTRUCTIONS



## WHERE TO PUT YOUR TRAP

Always set your trap inside the wooden box to keep pets and kids safe.

Place the trap box on a flat surface near your compost bin, wood pile, along walls or under cover where you suspect rats are lurking.



## WHAT BAIT TO USE

Rats love energy-rich foods high in fat and sugar. If you aren't getting catches, change your bait type.

- Peanut butter
- Jam
- Nutella
- Chocolate
- Animal fat

## HOW TO SET YOUR TRAP

- 1 Remove the bait cup from the trap's underside by twisting left. Fill the bait cup and replace.



- 2 Firmly squeeze the back end of the trap so it clicks and the jaws stay open.



- 3 Slide the set trap into the box with the jaws facing forward. Ensure the trap is near the back of the box. Replace wire mesh.

## CHECKING YOUR TRAP

Check and rebait your trap at least once a week. You're more likely to catch something if the bait is fresh.

To dispose of a carcass, squeeze the back of the trap to open the jaws. Bury the carcass in your garden or put it in the rubbish bin

To deactivate trap, press the treadle against the side of the trap box or a wall and slowly shut the jaws.

**Important:** Record trap catch data using the Trap.NZ website or app.

## TIPS AND TRICKS

- Scuff the entrance to the trap box to create interest for pests
- Slugs and insects like to snack on bait and can clean out the trap overnight
- Offer pests some 'free' bait on the doorstep of the trap box
- Move your trap's location if you aren't getting catches
- Don't wash your trap with chemicals, this will deter pests